

Sl. No.	Plot No.	Area (sq. m)	Zone	Remarks	Total Area (sq. m)
1	34	15.23	1	1	3075.38
2	35	15.23	1	1	3332.25
3	46	15.23	1	1	3666.10
4	39	15.23	1	1	3952.80
5	24	15.23	1	1	6430.38
6	21	15.23	1	1	3983.80
7	2	15.23	1	1	120.61
8	40	15.23	1	1	138.78
9	11	15.23	1	1	1305.06
10	8	15.23	1	1	4591.37
11	7	15.23	1	1	2532.54
12	10	15.23	1	2	3487.03
13	5	15.23	1	1	4163.90
14	2	15.23	1	1	3275.58
15	64	15.23	1	1	838.62
16	59	15.23	1	1	2535.08
17	58	15.23	1	1	407.77
18	57	15.23	1	1	5331.45
19	56	15.23	1	1	7729.32
20	55	15.23	1	1	10337.23
21	800	15.23	1	1	1465.72
22	95	15.23	1	1	12515.56
23	95	15.23	1	3	4098.55
24	94	15.23	1	3	2200.61
25	63	15.23	1	1	2755.24
26	60	15.23	1	1	1482.54
27	133	15.23	1	1	8595.98
28	132	15.23	1	1	1793.31
29	131	15.23	1	1	11851.35
30	130	15.23	1	1	1719.80
31	129	15.23	1	1	5182.52
32	128	15.23	1	1	3234.22
33	127	15.23	1	1	2588.86
34	126	15.23	1	1	603.28
35	125	15.23	1	1	2598.40
36	124	15.23	1	1	887.63
37	123	15.23	1	1	1709.14
38	122	15.23	1	1	4235.67
39	121	15.23	1	1	3086.34
40	120	15.23	1	1	5332.07
41	119	15.23	1	1	5425.10
42	118	15.23	1	1	22212.89
43	115	15.23	1	1	1438.04
44	115	15.23	1	3	2763.74
45	114	15.23	1	1	3077.51
46	113	15.23	1	3	3778.54
47	112	15.23	1	1	40.81
48	111	15.23	1	3	2581.52
49	110	15.23	1	1	5553.65
50	109	15.23	1	3	27127.52
51	108	15.23	1	3	20249.29
52	29	15.23	1	1	3281.43
53	28	15.23	1	1	6080.07
54	27	15.23	1	1	7408.92
55	26	15.23	1	1	10679.32
56	25	15.23	1	1	5872.92
57	24	15.23	1	1	3061.54
58	23	15.23	1	1	88397.21
59	22	15.23	1	1	7732.02
60	168	15.23	1	1	2736.40
61	245	15.23	1	1	1464.72
62	244	15.23	1	1	5411.85
63	243	15.23	1	1	1652.56
64	242	15.23	1	1	8538.31
65	237	15.23	1	1	7608.25

1. The area shown in this plan is reserved for the purpose of the development of Zone (A) Land Use Plan.

2. The area shown in this plan is reserved for the purpose of the development of Zone (A) Land Use Plan.

3. The area shown in this plan is reserved for the purpose of the development of Zone (A) Land Use Plan.

4. The area shown in this plan is reserved for the purpose of the development of Zone (A) Land Use Plan.

5. The area shown in this plan is reserved for the purpose of the development of Zone (A) Land Use Plan.

6. The area shown in this plan is reserved for the purpose of the development of Zone (A) Land Use Plan.

7. The area shown in this plan is reserved for the purpose of the development of Zone (A) Land Use Plan.

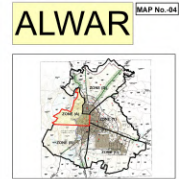
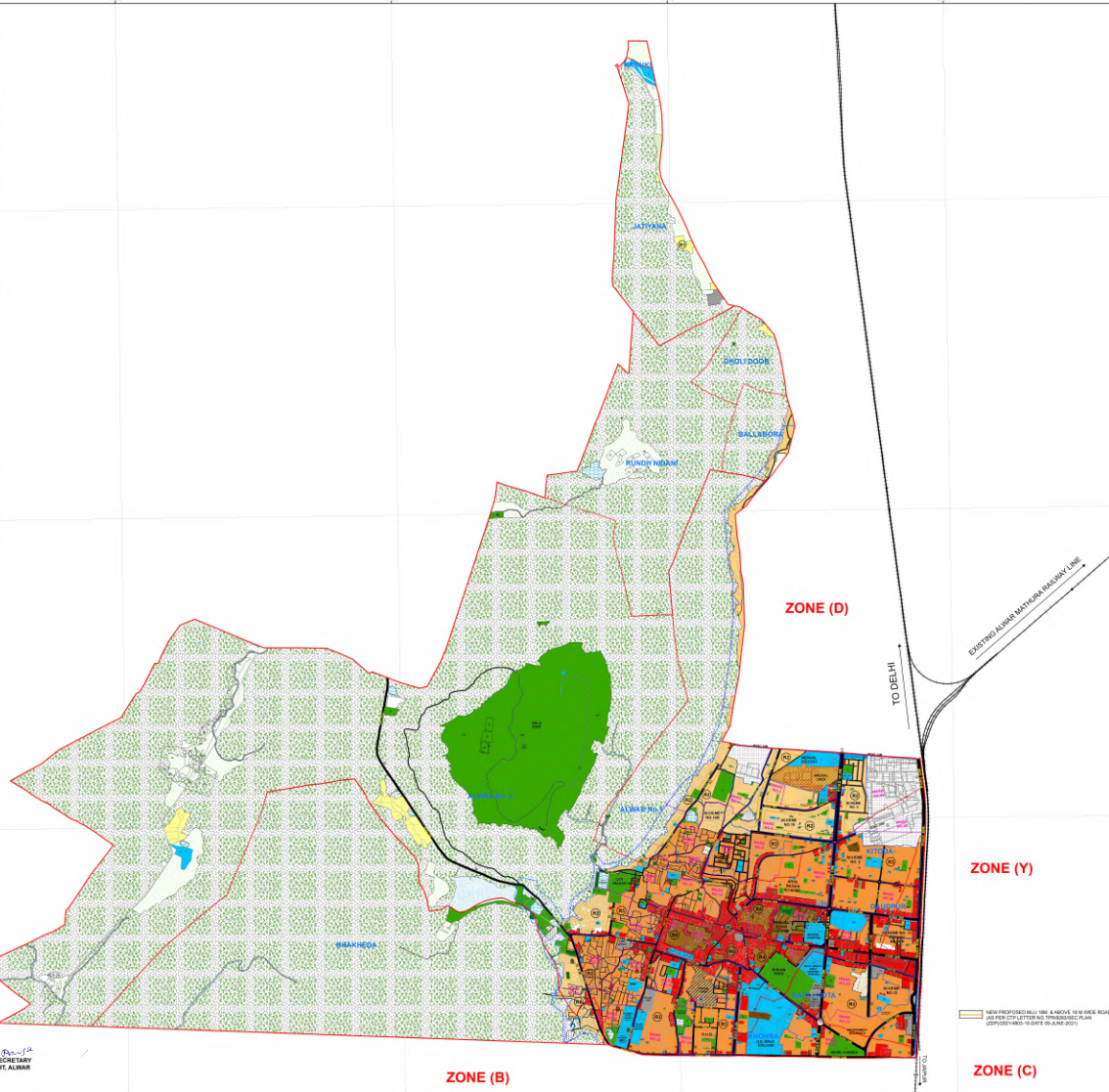
8. The area shown in this plan is reserved for the purpose of the development of Zone (A) Land Use Plan.

9. The area shown in this plan is reserved for the purpose of the development of Zone (A) Land Use Plan.

10. The area shown in this plan is reserved for the purpose of the development of Zone (A) Land Use Plan.

ZONAL DEVELOPMENT PLAN, ZONE(A) APPROVED AS PER TRUST DECISION DATED 29-09-2021

DEPUTY TOWN PLANNER ALWAR ZONE ALWAR  
 DEPUTY TOWN PLANNER UT ALWAR  
 SECRETARY UT ALWAR



### KEY PLAN

REMARKS	RESIDENTIAL
High Density Residential (R-1)	High Density Residential (R-1)
Medium Density Residential (R-2)	Medium Density Residential (R-2)
Low Density Residential (R-3)	Low Density Residential (R-3)
Special Residential (R-4)	Special Residential (R-4)
Government Residential (R-5)	Government Residential (R-5)
Public Land (R-6)	Public Land (R-6)
Commercial (R-7)	Commercial (R-7)
Industrial (R-8)	Industrial (R-8)
Government (R-9)	Government (R-9)
Public Land (R-10)	Public Land (R-10)
Public Land (R-11)	Public Land (R-11)
Public Land (R-12)	Public Land (R-12)
Public Land (R-13)	Public Land (R-13)
Public Land (R-14)	Public Land (R-14)
Public Land (R-15)	Public Land (R-15)
Public Land (R-16)	Public Land (R-16)
Public Land (R-17)	Public Land (R-17)
Public Land (R-18)	Public Land (R-18)
Public Land (R-19)	Public Land (R-19)
Public Land (R-20)	Public Land (R-20)
Public Land (R-21)	Public Land (R-21)
Public Land (R-22)	Public Land (R-22)
Public Land (R-23)	Public Land (R-23)
Public Land (R-24)	Public Land (R-24)
Public Land (R-25)	Public Land (R-25)
Public Land (R-26)	Public Land (R-26)
Public Land (R-27)	Public Land (R-27)
Public Land (R-28)	Public Land (R-28)
Public Land (R-29)	Public Land (R-29)
Public Land (R-30)	Public Land (R-30)
Public Land (R-31)	Public Land (R-31)
Public Land (R-32)	Public Land (R-32)
Public Land (R-33)	Public Land (R-33)
Public Land (R-34)	Public Land (R-34)
Public Land (R-35)	Public Land (R-35)
Public Land (R-36)	Public Land (R-36)
Public Land (R-37)	Public Land (R-37)
Public Land (R-38)	Public Land (R-38)
Public Land (R-39)	Public Land (R-39)
Public Land (R-40)	Public Land (R-40)
Public Land (R-41)	Public Land (R-41)
Public Land (R-42)	Public Land (R-42)
Public Land (R-43)	Public Land (R-43)
Public Land (R-44)	Public Land (R-44)
Public Land (R-45)	Public Land (R-45)
Public Land (R-46)	Public Land (R-46)
Public Land (R-47)	Public Land (R-47)
Public Land (R-48)	Public Land (R-48)
Public Land (R-49)	Public Land (R-49)
Public Land (R-50)	Public Land (R-50)
Public Land (R-51)	Public Land (R-51)
Public Land (R-52)	Public Land (R-52)
Public Land (R-53)	Public Land (R-53)
Public Land (R-54)	Public Land (R-54)
Public Land (R-55)	Public Land (R-55)
Public Land (R-56)	Public Land (R-56)
Public Land (R-57)	Public Land (R-57)
Public Land (R-58)	Public Land (R-58)
Public Land (R-59)	Public Land (R-59)
Public Land (R-60)	Public Land (R-60)
Public Land (R-61)	Public Land (R-61)
Public Land (R-62)	Public Land (R-62)
Public Land (R-63)	Public Land (R-63)
Public Land (R-64)	Public Land (R-64)
Public Land (R-65)	Public Land (R-65)
Public Land (R-66)	Public Land (R-66)
Public Land (R-67)	Public Land (R-67)
Public Land (R-68)	Public Land (R-68)
Public Land (R-69)	Public Land (R-69)
Public Land (R-70)	Public Land (R-70)
Public Land (R-71)	Public Land (R-71)
Public Land (R-72)	Public Land (R-72)
Public Land (R-73)	Public Land (R-73)
Public Land (R-74)	Public Land (R-74)
Public Land (R-75)	Public Land (R-75)
Public Land (R-76)	Public Land (R-76)
Public Land (R-77)	Public Land (R-77)
Public Land (R-78)	Public Land (R-78)
Public Land (R-79)	Public Land (R-79)
Public Land (R-80)	Public Land (R-80)
Public Land (R-81)	Public Land (R-81)
Public Land (R-82)	Public Land (R-82)
Public Land (R-83)	Public Land (R-83)
Public Land (R-84)	Public Land (R-84)
Public Land (R-85)	Public Land (R-85)
Public Land (R-86)	Public Land (R-86)
Public Land (R-87)	Public Land (R-87)
Public Land (R-88)	Public Land (R-88)
Public Land (R-89)	Public Land (R-89)
Public Land (R-90)	Public Land (R-90)
Public Land (R-91)	Public Land (R-91)
Public Land (R-92)	Public Land (R-92)
Public Land (R-93)	Public Land (R-93)
Public Land (R-94)	Public Land (R-94)
Public Land (R-95)	Public Land (R-95)
Public Land (R-96)	Public Land (R-96)
Public Land (R-97)	Public Land (R-97)
Public Land (R-98)	Public Land (R-98)
Public Land (R-99)	Public Land (R-99)
Public Land (R-100)	Public Land (R-100)

ZONAL DEVELOPMENT PLAN OF ZONE (A) LAND USE PLAN

DEPUTY TOWN PLANNER ALWAR ZONE ALWAR  
 DEPUTY TOWN PLANNER UT ALWAR  
 SECRETARY UT ALWAR